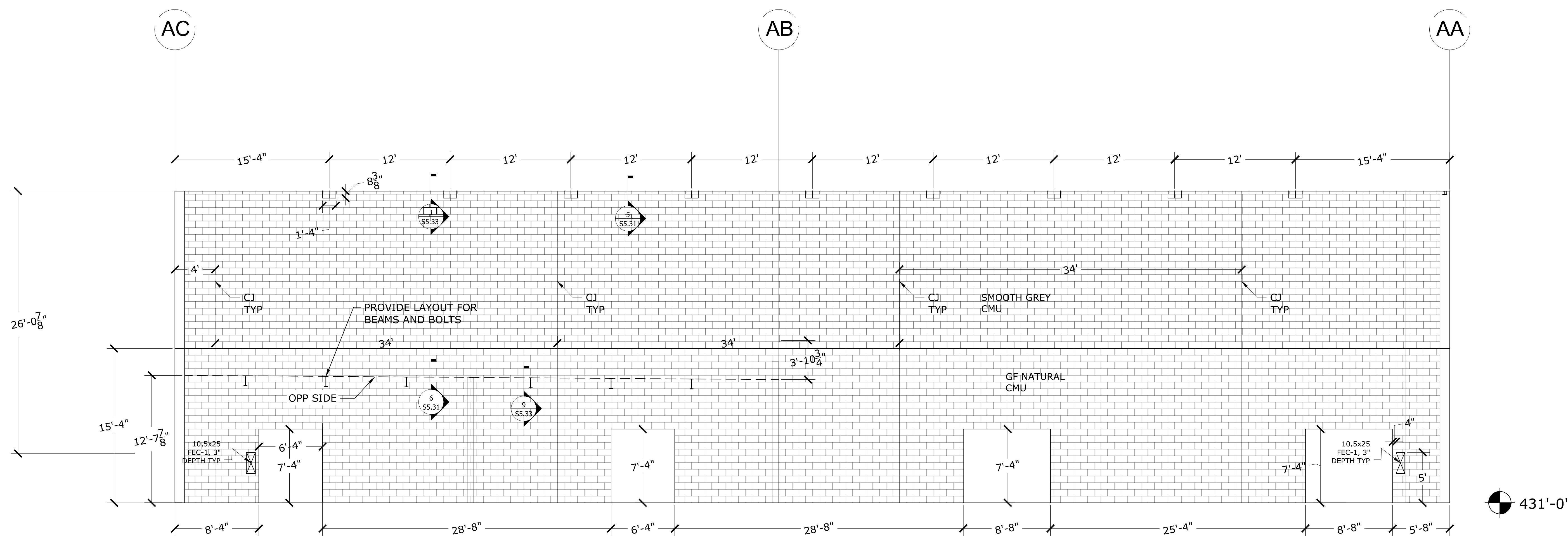




**Masonry Contractors**  
Commercial Industrial Institutional

J&S MASONRY INC.  
PO BOX 497, NORTH BEND, WA 98045  
425-888-0200  
[www.jandsmasonry.com](http://www.jandsmasonry.com)

### CMU COORDINATION DRAWINGS



431'-0"

1 AREA B ELEVATION  
Scale: 1/8"=1'

Date: 6-22-12

Project Address:

M2